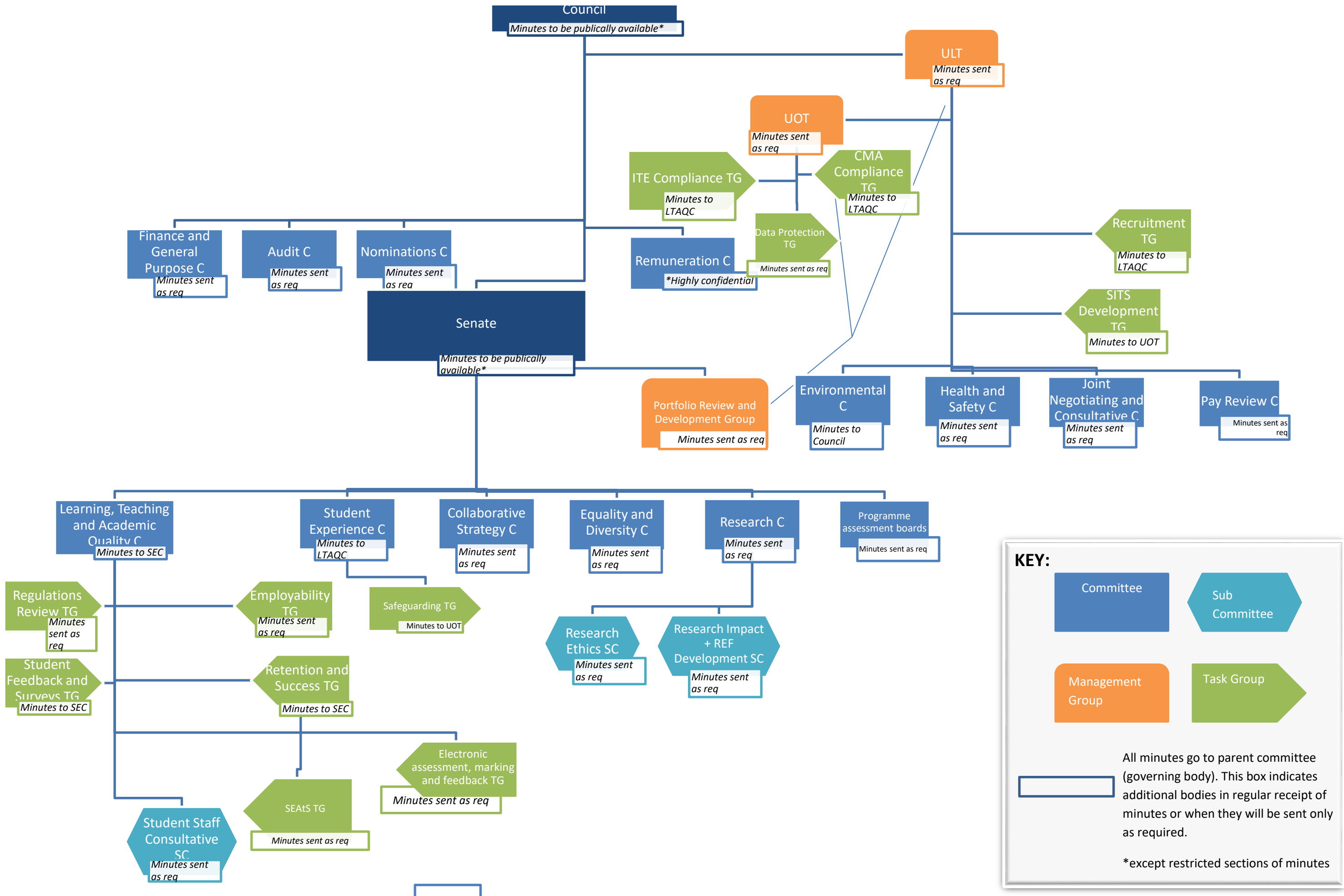


Newman Committee Structure Diagram – September 2018



KEY:

- Committee (Blue rectangle)
- Sub Committee (Blue hexagon)
- Management Group (Orange rounded rectangle)
- Task Group (Green chevron)

All minutes go to parent committee (governing body). This box indicates additional bodies in regular receipt of minutes or when they will be sent only as required.

*except restricted sections of minutes